

ESP32-S3-Plus development board information

Product introduction

ESP32-S3-PLUS is a high-performance development board with an appearance hole compatible with Arduino UNO R3/R4. It is designed based on the ESP32-S3-WROOM-1-N16R8 module. The ESP32-S3-WROOM-1-N16R8 module has 16MB Flash and 8MB PSRAM can store more codes and data. The ESP32-S3 chip equipped with the module has powerful neural network computing capabilities and signal processing capabilities.

It supports Wi-Fi and Bluetooth 5.0 dual-mode communication, which reduces the difficulty of device network configuration. It also supports Bluetooth Mesh (Bluetooth Mesh) protocol and Espressif Systems Wi-Fi Mesh to achieve higher communication stability and larger coverage area. FireBeetle 2 ESP32-S3 supports the Matter protocol and can be used to develop devices that comply with the unified standards of the smart home industry and is suitable for a wide range of IoT scenarios.

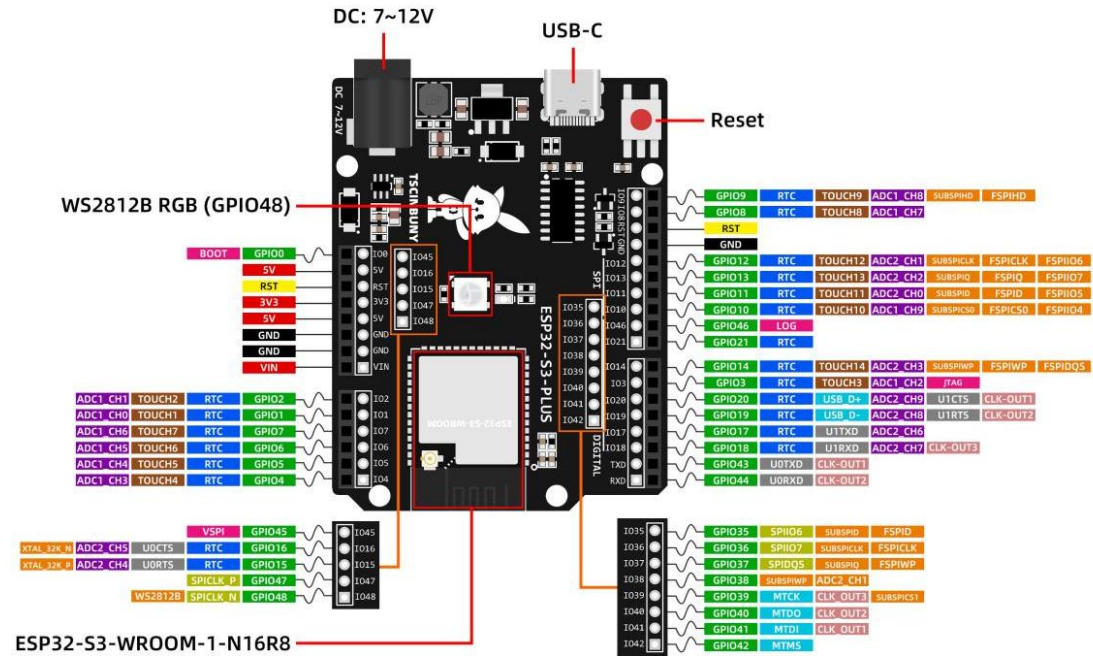
You can use Arduino IDE, ESP-IDF, and MicroPython for programming, and C language and python can easily manipulate the hardware.

Product Features

- Using ESP32-S3-WROOM-1-N16R8 module
- Built-in ESP32-S3 series SoC, Xtensa® dual-core 32-bit LX7 microprocessor
- 16MB flash memory, 8MB PS RAM, 384kB ROM
- 36 GPIO ports
- Onboard PCB antenna, supports external antenna
- Support 802.11b/g/n standard 2.4GHz Wi-Fi, Bluetooth 5.0
- Data rate 150Mbps
- ADC, GPIO, I²C, I²S, SPI, PWM, UART, USB
- DC head voltage power supply 7~9V, USB interface power supply 5V
- Working temperature -40° C ~ 65° C (TA)

Pinout

TSCINBUNY ESP32-S3 PLUS Pinout



Dimensions

